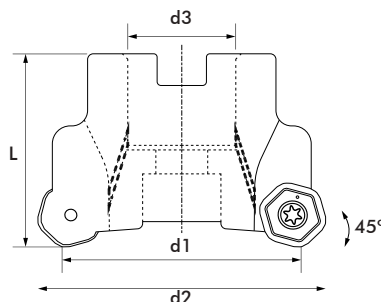
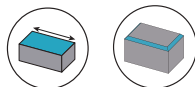


FRESADO  
MILLING

HN07



Ref.	Plaquita Inserts	d1	d2	d3	L	z	Refrigeración Coolant	Complementos Spare parts
HN07-050A05R	HNMX0704..	50	58,7	22	40	5	●	Tornillo de inserción Insert screw <b>4005</b>
HN07-063A06R	HNMX0704..	63	71,7	22	40	6	●	
HN07-080A08R	HNMX0704..	80	88,7	27	50	8	●	
HN07-100A09R	HNMX0704..	100	108,7	32	50	9	●	

HNMX07

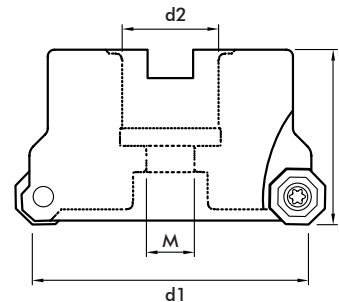
	Ref.	Material					
		P	M	K	N	S	H
	HNMX0704-SG K54100	●	●	●			

Condiciones de corte

Recommended cutting conditions

MATERIAL	Vc	fz	ap
Acero al carbono Carbon steel	140 ~ 250	0.10 ~ 0.3	0.3 ~ 3.5
Inoxidable Stainless	60 ~ 140	0.08 ~ 0.2	0.3 ~ 2.0
Aleación de alta temperatura High temperature Alloy	30 ~ 70	0.08 ~ 0.2	0.3 ~ 2.0

OF05



Ref.	Plaquita Inserts	d1	d2	L	M	z	Complementos Spare parts
OF05-050A05R	OFMT05T3...	50	22	40	11	5	Tornillo de inserción Insert screw <b>4011</b>
OF05-063A06R	OFMT05T3...	63	22	40	11	6	
OF05-080A07R	OFMT05T3...	80	27	50	38	7	
OF05-100A08R	OFMT05T3...	100	32	50	46	8	

OFMT05

	Ref.	Material					
		P	M	K	N	S	H
	OFMT05T3TN-MG KS4100	●	●	●		●	
	OFMT05T3TN-RG KS4100	●	●	●		●	

Condiciones de corte

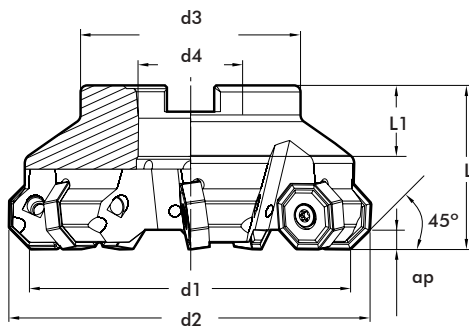
Recommended cutting conditions

MATERIAL	Vc	fz	ap
Acero al carbono Carbon steel	120 ~ 250	0.10 ~ 0.30	0.3 ~ 2.8
Inoxidable Stainless	100 ~ 180	0.08 ~ 0.25	0.3 ~ 1.7
Hierro fundido Cast iron	120 ~ 250	0.10 ~ 0.30	0.3 ~ 2.8
Aleación de alta temperatura High temperature Alloy	40 ~ 100	0.08 ~ 0.25	0.3 ~ 1.7
Acero endurecido Hardened steel	50 ~ 100	0.08 ~ 0.25	0.3 ~ 1.7



FRESADO  
MILLING

ON08



Ref.	Plaquita Inserts	d1	d2	d3	d4	L	L1	z	ap	Ref. Coolant
ON08-063A05R	ONMU08..	63	75	49	22	40	22	5	5,5	●
ON08-080A06R	ONMU08..	80	92	58	27	50	25	6	5,5	●
ON08-100A07R	ONMU08..	100	112	67	32	50	26	7	5,5	●
ON08-125A08R	ONMU08..	125	137	87	40	63	32	8	5,5	
ON08-160A10R	ONMU08..	160	172	107	40	63	32	10	5,5	
ON08-200A12R	ONMU08..	200	212	130	60	63	40	12	5,5	
ON08-315A16R	ONMU08..	315	327	220	60	63	40	16	5,5	

ONMU08

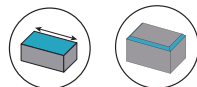
Ref.	Material					
	P	M	K	N	S	H
ONMU080608 KS2100	●	●				
ONMU080608 KS4100	●					
ONMU080612 KS2100	●	●	●		●	●

Condiciones de corte

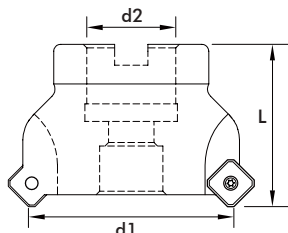
Recommended cutting conditions

MATERIAL	Vc	Vc	fz	
	KS2100	KS4100	ONMU080608	ONMU080612
Acero sin aleación Non-Alloyed Steel (VDI 1~5)	100 - 210	180 - 380	0.22~0.50	0.05~0.40
Acero de aleación baja Low-Alloyed Steel (VDI 6~9)	70 - 180	120 - 300	0.22~0.50	0.05~0.40
Acero de aleación alta High-Alloyed Steel (VDI 10~11)	40 - 90	70 - 150	0.22~0.50	0.05~0.40
Ferrítico y Martensítico Ferritic & Martensitic (VDI 12~13)	70 - 180	120 - 200	0.22~0.50	0.05~0.40
Acero inoxidable austenítico Austenitic Stainless Steel (VDI 14)	70 - 200	130 - 250	0.22~0.50	0.05~0.40
Fundición de hierro gris Grey Cast Iron (VDI 15~16)	-	120 - 250	0.22~0.50	0.05~0.40
Hierro fundido nodular Nodular Cast Iron (VDI 17~18)	-	130 - 220	0.22~0.50	0.05~0.40
Titanio y superaleaciones Titanium & Superalloys (VDI 31~37)	-	25 - 45	0.22~0.50	0.05~0.40
Material duro Hard materials (VDI 38~41)	-	40 - 80	0.22~0.50	0.05~0.40

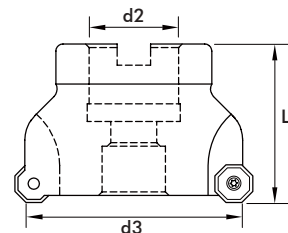
SN12



SNMX1205



ONMX0505



Ref.	Plaquita Inserts	d1	d2	d3	L	z
SN12-050A04R	SNMX1205.. ONMX0505..	50	22	52,9	40	4
SN12-063A05R	SNMX1205.. ONMX0505..	63	22	65,9	40	5
SN12-080A06R	SNMX1205.. ONMX0505..	80	27	82,9	50	6
SN12-100A08R	SNMX1205.. ONMX0505..	100	32	102,9	50	8

Complementos Spare parts	
Tornillo de inserción Insert screw	4015

ONMX05  
SNMX12

	Ref.	Material					
		P	M	K	N	S	H
	ONMX0505-RG KS2100	●	●	●			●
	ONMX0505-RG KS4100	●	●	●		●	
	SNMX1205-MG KS2100	●	●	●			●
	SNMX1205-MG KS4100	●	●	●		●	
	SNMX1205-RG KS2100	●	●	●			●
	SNMX1205-RG KS4100	●	●	●		●	

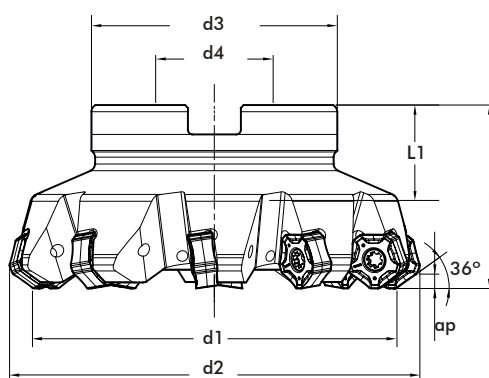
Condiciones de corte

Recommended cutting conditions

MATERIAL	ONMX0505			SNMX1205		
	Vc	fz	ap	Vc	fz	ap
Acero al carbono Carbon steel	80 ~ 200	0.1 ~ 0.3	0.3 ~ 2.0	80 ~ 200	0.1 ~ 0.3	0.3 ~ 6.0
Inoxidable Stainless	50 ~ 110	0.08 ~ 0.25	0.3 ~ 1.5	50 ~ 110	0.08 ~ 0.25	0.3 ~ 3.6
Hierro fundido Cast iron	80 ~ 180	0.1 ~ 0.3	0.3 ~ 2.0	80 ~ 180	0.1 ~ 0.3	0.3 ~ 6.0
Aleación de alta temperatura High temperature Alloy	30 ~ 60	0.08 ~ 0.2	0.3 ~ 1.5	30 ~ 60	0.08 ~ 0.2	0.3 ~ 3.6
Acero endurecido Hardened steel	35 ~ 70	0.08 ~ 0.23	0.3 ~ 1.5	35 ~ 70	0.08 ~ 0.23	0.3 ~ 3.6

FRESADO  
MILLING

PN12



Ref.	Plaquita Inserts	d1	d2	d3	d4	L	L1	z	ap	Ref. Coolant
PN12-050A04R	PNMU12..	50	83,6	42	22	40	20	4	4	●
PN12-050A05R	PNMU12..	50	58,6	42	22	40	20	5	4	●
PN12-063A05R	PNMU12..	63	83,6	48	22	40	20	5	4	●
PN12-063A06R	PNMU12..	63	96,6	48	22	40	20	6	4	●
PN12-080A08R	PNMU12..	80	96,6	58	27	50	23	8	4	●
PN12-100A10R	PNMU12..	100	1113,6	67	32	50	67	10	4	●
PN12-125A10R	PNMU12..	125	158,6	89	40	63	89	10	4	●

PNMU12

Ref.	Material					
	P	M	K	N	S	H
PNMU1206ZNN KS2100	●	●				
PNMU1206ZNN KS3100	●					
PNMU1206ZNN KS4100	●	●	●		●	●

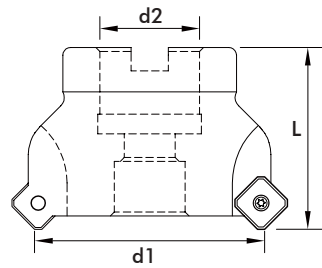
Condiciones de corte

Recommended cutting conditions

MATERIAL	Vc	Vc	Vc	fz
	KS2100	KS3100	KS4100	
Acero sin aleación Non-Alloyed Steel (VDI 1~5)	100 - 210	170 - 300	180 - 380	0.05~0.50
Acero de aleación baja Low-Alloyed Steel (VDI 6~9)	70 - 180	180 - 250	120 - 300	0.05~0.50
Acero de aleación alta High-Alloyed Steel (VDI 10~11)	40 - 90	100 - 140	70 - 150	0.05~0.50
Ferrítico y Martensítico Ferritic & Martensitic (VDI 12~13)	70 - 180	-	120 - 200	0.05~0.50
Acero inoxidable austenítico Austenitic Stainless Steel (VDI 14)	70 - 200	-	130 - 250	0.05~0.50
Fundición de hierro gris Grey Cast Iron (VDI 15~16)	-	-	120 - 250	0.05~0.50
Hierro fundido nodular Nodular Cast Iron (VDI 17~18)	-	-	130 - 220	0.05~0.50
Titanio y superaleaciones Titanium & Superalloys (VDI 31~37)	-	-	25 - 45	0.05~0.50
Material duro Hard materials (VDI 38~41)	-	-	40 - 80	0.05~0.50



SE12



Ref.	Plaquita Inserts	d1	d2	L	z
SE12-050A04R	SEKW1204.. SEET1204..	50	22	40	4
SE12-063A05R	SEKW1204.. SEET1204..	63	22	45	5
SE12-080A06R	SEKW1204.. SEET1204..	80	27	50	6

Complementos Spare parts	
Tornillo de inserción Insert screw	5006

SEET12  
SEKT12  
SEKW12

	Ref.	Material					
		P	M	K	N	S	H
	SEET1204AFFN-AL H10T				●		
	SEET1204AFFN-FG KS2100	●	●	●			●
	SEKT1204AFTN-RG KS4100	●	●	●		●	
	SEKW1204AFEN KS3100	●	●	●			
	SEKW1204AFSN-F KS3100	●	●	●			
	SEKW1204AFTN KS3100	●	●	●			

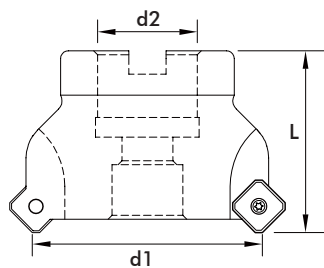
Condiciones de corte

Recommended cutting conditions

MATERIAL	Vc	fz	ap
Acero al carbono Carbon steel	120 ~ 250	0.10 ~ 0.30	0.3 ~ 5.5
Inoxidable Stainless	100 ~ 180	0.08 ~ 0.25	0.3 ~ 3.0
Hierro fundido Cast iron	120 ~ 250	0.10 ~ 0.30	0.3 ~ 5.5
Aluminio Aluminum Alloy	300 ~ 1000	0.10 ~ 0.40	0.3 ~ 5.5
Aleación de alta temperatura High temperature Alloy	40 ~ 100	0.08 ~ 0.25	0.3 ~ 3.0
Acero endurecido Hardened steel	50 ~ 100	0.08 ~ 0.25	0.3 ~ 3.0

FRESADO  
MILLING

SE13



Ref.	Plaquita Inserts	d1	d2	L	z	Complementos Spare parts
SE13-050A04R	SEMT13T3..	50	22	40	4	Tornillo de inserción Insert screw <b>350535</b>
SE13-063A05R	SEMT13T3..	63	22	40	5	
SE13-080A06R	SEMT13T3..	80	27	50	6	
SE13-100A07R	SEMT13T3..	100	32	50	7	
SE13-125A08R	SEMT13T3..	125	40	50	8	
SE13-160A10R	SEMT13T3..	160	40	63	10	

FRESADO

SEET13  
SEMT13

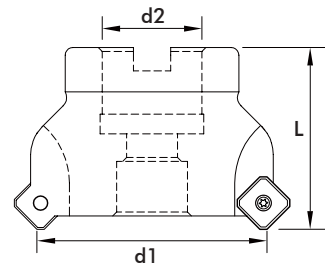
	Ref.	Material					
		P	M	K	N	S	H
	SEET13T3AGFN-AL H10T				●		
	SEET13T3AGFN-FG KS2100	●	●	●			●
	SEMT13T3AGEN-MF KS2100	●	●	●			●
	SEMT13T3AGEN-MF KS4100	●	●	●		●	
	SEMT13T3AGSN-MF KS2100	●	●	●			●
	SEMT13T3AGSN-MF KS4100	●	●	●		●	
	SEMT13T3AGEN-MG KS2100	●	●	●			●
	SEMT13T3AGEN-MG KS4100	●	●	●		●	
	SEMT13T3AGTN-MG KS2100	●	●	●			●
	SEMT13T3AGTN-MG KS4100	●	●	●		●	
	SEMT13T3AGTN-RG KS4100	●	●	●		●	
	SEMT13T3AGTN-HG KS4100	●	●	●		●	

Condiciones de corte

Recommended cutting conditions

MATERIAL	Vc	fz	ap
Acero al carbono Carbon steel	120 ~ 250	0.10 ~ 0.30	0.3 ~ 5.5
Inoxidable Stainless	100 ~ 180	0.08 ~ 0.25	0.3 ~ 3.0
Hierro fundido Cast iron	120 ~ 250	0.10 ~ 0.30	0.3 ~ 5.0
Aluminio Aluminum Alloy	300 ~ 1000	0.10 ~ 0.40	0.3 ~ 5.5
Aleación de alta temperatura High temperature Alloy	40 ~ 100	0.08 ~ 0.25	0.3 ~ 3.0
Acero endurecido Hardened steel	50 ~ 100	0.08 ~ 0.25	0.3 ~ 3.0

W212



Ref.	Plaquita Inserts	d1	d2	L	z	Complementos Spare parts
W245-050A04R	W245-12T3..	50	22	40	4	Tornillo de inserción Insert screw <b>350535</b>
W245-063A05R	W245-12T3..	63	22	40	5	
W245-080A06R	W245-12T3..	80	27	50	6	
W245-100A07R	W245-12T3..	100	32	50	7	
W245-125A08R	W245-12T3..	125	40	63	8	
W245-160A10R	W245-12T3..	160	40	63	10	

W245

Ref.	Material	Material					
		P	M	K	N	S	H
W245-12T3-AL H10T					●		
W245-12T3-FG KS2100		●	●	●			●
W245-12T3-MG KS2100		●	●	●			●
W245-12T3-MG KS4100		●	●	●		●	
W245-12T3-HG KS4100		●	●	●		●	

Condiciones de corte

Recommended cutting conditions

MATERIAL	Vc	fz	ap
Acero al carbono Carbon steel	120 ~ 250	0.10 ~ 0.30	0.3 ~ 5.5
Inoxidable Stainless	100 ~ 180	0.08 ~ 0.25	0.3 ~ 3.0
Hierro fundido Cast iron	120 ~ 250	0.10 ~ 0.30	0.3 ~ 5.0
Aluminio Aluminum Alloy	300 ~ 1000	0.10 ~ 0.40	0.3 ~ 5.5
Aleación de alta temperatura High temperature Alloy	40 ~ 100	0.08 ~ 0.25	0.3 ~ 3.0
Acero endurecido Hardened steel	50 ~ 100	0.08 ~ 0.25	0.3 ~ 3.0